

Les Clefs d'Or Japan Petit Tour

Nezu Museum

2011/10/19 11:00-12:30

Participants

Akemi Koyama, Ikuyo Takeuchi, Masumi Tajima, Shinobu Momoi

Curator

Chief Curator, Nezu Museum

Ms. Yukiko Shirahara

Introduction

Nezu Museum was open in 1941 in Minami Aoyama. Museum was used to be a private residence of Mr. Kaichiro Nezu(1860-1940) who was passionate about collecting Old Asian art.

Nezu Museum itself

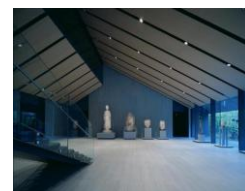
It reopened in October 2008. The museum itself was designed by Mr. Kengo Kuma and they had large renewal construction for this museum.

It has genuine Japanese atmosphere with beautiful Japanese garden. The first, you will find in this museum are bamboo trees. This passage with bamboo trees allow you to be ready for breath taking entrance, and the garden in front of you. The pond in the garden is natural pond. The water in the pond is spring water from the ground.



Important thing is that this museum does not have "fixed route" This is on purpose. People can start from the garden, shop, 2nd floor anywhere they like. Tasting arts at your taste is the most important thing.

The museum shop is at the entrance. People can see the size of the shop and think about how long to spend in each section in the beginning. The souvenir in the shop is so lovely. You feel happy to see them.



Arts

They changes works 7 times in a year. They always take long time to prepare very good explanation panel for the work. Ms. Shirahara is working with native translator to have perfect panel, and it takes such a long time.

This is very important for guests from overseas to have them understood Asian arts.

Feature

As it was written, the museum does not have “fixed rote” The café in the garden is very pleasant and we can spend whole day enjoying the change of the light in the garden.

The glass case is so clear that we cannot find any electric code in the case. They are hidden at the corner of the glass case so that we can enjoy the work.

You might feel it is little too dark in the museum, however the light is calculated to be able to enjoy the work the best.

Japanese paint.

People might think why we could enjoy Japanese paint this short terms.

Japanese paint is easily oxidized. The work by work, the term we can put it in the air is restricted.

That is the reason we have to share the precious time with many museums.

For Community

They would like to have good communication with our community.

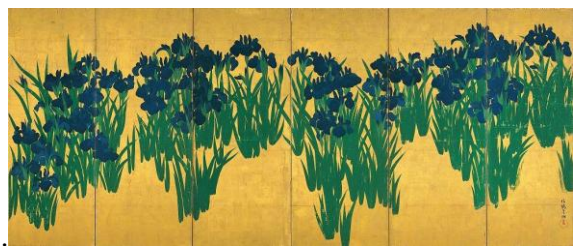
People usually can see children sitting on the floor ages to draw and there are many teachers to bring students in the museum in overseas.

There are many people who are connected to works in the museum.

Our future

Omotesando is very sophisticated area, there are many beautiful designers shops etc..

Their work is also art. On 11th of March, they were supposed to have special show of



Kakitubata with Issay Miyake dress

They could not hold the event due to the reason of earthquake in Tohoku, however they continue to keep this connection with the community and hoping to get closer to the community.